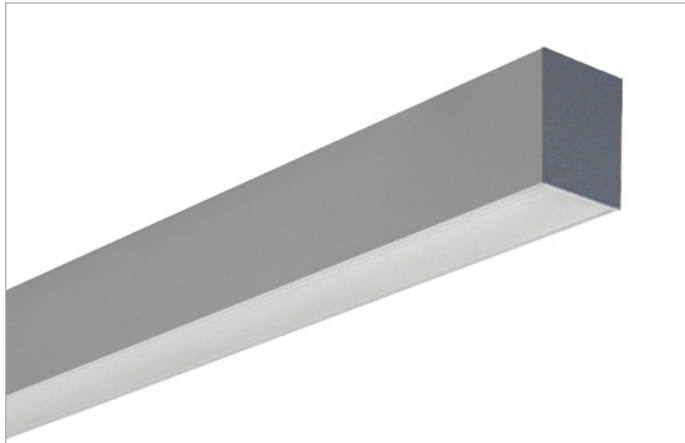


Atomic TOP LED HCL 1,2m

Ceiling and suspended LED luminaire



GENERAL CHARACTERISTICS

Power supply 198–264 VAC, 176–280 VDC

Standard EN 60598-1, EN 60598-2-1, EN 60598-2-22 (fundamental requirements), EN62471 (Photobiological hazard)

Protection grade IP40, IK05

Working temp. -20 ÷ +40°C

Mounting ceiling, suspended mounting

Body anodized aluminium profile with steel endings in grey

Screen microprismatic or opal optics

Driver DALI LED driver for Tunable White

Control gear 100 000 h

Lifetime**

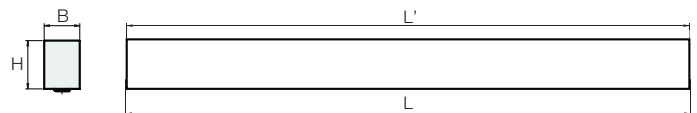
Luminous flux > 80 000 (L80B20)

maintenance**

Colour deviation 3 SDCM

Colour Temp. 2 700–6 500 K

** At a reference working temperature of 25°C



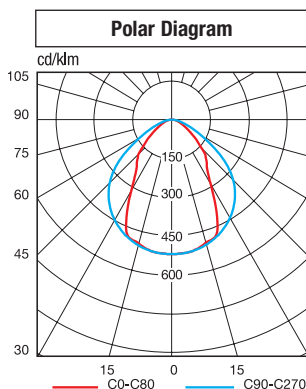
Length "L" including endings
Length "L'" profile without endings

• Dimensions (mm) •				Weight kg
L	B	H	L'	
1137	60	81,5	1134	2,6

Accessories

to be ordered separately

Order code	Description
99-0275	WIRE SUSPENSION, 1 pc, 200 cm (for one luminaire 2 pcs needed)
99-0095	TRANSPARENT POWER CABLE 200 cm (5x 1.5 mm ²)



Human Centric Lighting (HCL)

The effects of lighting on the biological rhythm of the human body have a direct impact on comfort, productivity and health in indoor environments. The model that should be followed is that dictated by nature with regard to light intensity, colour and direction, in harmony with our internal biological clock.

Atomic TOP LED Human Centric Lighting (HCL)



Order code	Description	LED Power W	Colour Temp. K	Colour rendering	Power consumption Max W	N° LEDs	Flux of LEDs lm (Tj=25°C)	Flux of fixture lm	Luminous efficiency lm/W	Energy Class	Packaging
T03-10140HW	Atomic TOP LED 2700–6500K 1,2m	17	4000	>80	20	64	2400	1900	95	A+	1
T03-10140HZ	Atomic TOP LED 2700–6500K 1,2m	17	4000	>80	20	64	2400	1700	85	A+	1
T03-10141HW	Atomic TOP LED 2700–6500K 1,2m	30	4000	>80	34	128	4700	3100	91	A+	1
T03-10141HZ	Atomic TOP LED 2700–6500K 1,2m	30	4000	>80	34	128	4700	2700	79	A+	1

R_a>90 on request, Z – opal cover, W – microprismatic cover