

H-PRO

lighting



IP66

IK09

960°

SD DERATING
+60°C
-30°C

RD
+40°C
-20°C

EMERGENCY
+40°C
0°C



High luminous flux high bay light with a luminous flux of more than 40000 lm, equipped with an eye bolt for suspension.



Available in Self-dimming Smart Driver version, controllable from the control unit, or 0÷10V preconfigured to manage 4 classes of luminous flux.



Blade optics with three different beam patterns: Diffusing, Concentrating, Elliptical.

Applications

Industry, logistics warehouses, hangars

Characteristics

Power supply

93÷265 VAC - 50/60Hz 176÷250 VDC

Power supply - MTBF at 25°C 100,000h

Luminous flux retention at 25°C

>60,000h (240W) (L80B20)

>70,000h (150W) (L80B20)

Colour stability 3 SDCM

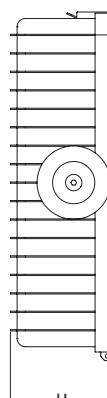
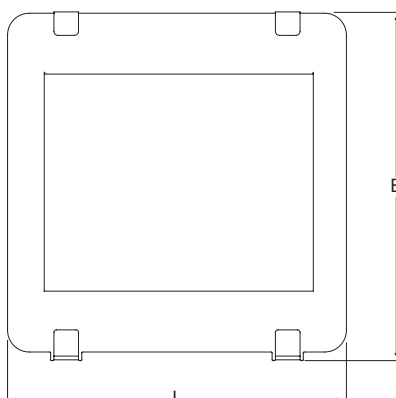
Mounting Floor, wall, lighthouse towers

Housing Polyester powder-coated die-cast aluminium, RAL 7040

Optics Parabolic blades, made of anti-iridescent polished anodised aluminium. Diffusing, concentrating, elliptical.

Screen Tempered glass prism, 4mm

Compliance EN 60598-1, EN 60598-2-1, EN 60598-2-22, DIN 18031-3, EN 62471 (photobiological risk-free), 2014/53/EU

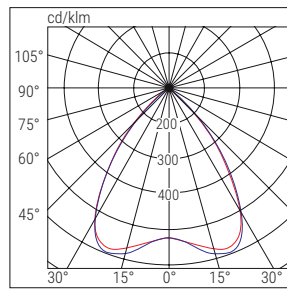
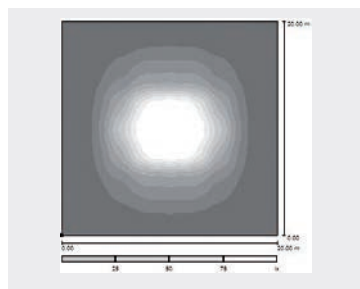


Dimensions mm

L	B	H
436	434	121

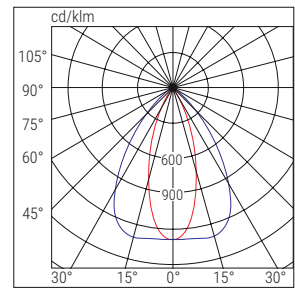
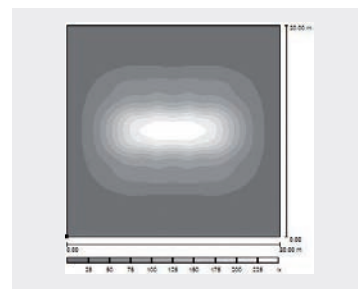
078

DIFFUSED OPTICS



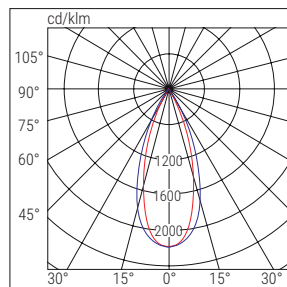
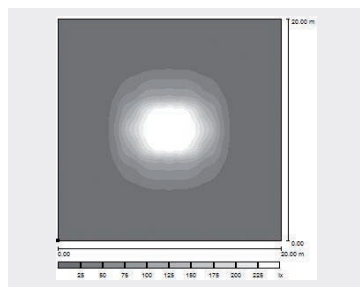
■ C90-C270 ■ C0-C180

ELLIPTICAL OPTICS



■ C90-C270 ■ C0-C180

CONCENTRATING OPTICS



■ C90-C270 ■ C0-C180

	Order Code	Description	Optics	Power W	Colour temp. K	Chromatic yield	LED Flux lm (Tj=25°C)	Luminaire flux lm	Brightness efficiency lm/W	Weight Kg	Packaging Single/ Multi pack
SD	40839	RIF S 150W D SD 4K	DIFFUSING	153	4000	>80	27000	22824	149	7.7	1
	40842	RIF S 150W C SD 4K	CONCENTRATING	153	4000	>80	27000	21683	142	7.7	1
	40845	RIF S 150W E SD 4K	ELLIPTICAL	153	4000	>80	27000	22140	145	7.7	1
	40848	RIF S 240W D SD 4K	DIFFUSING	246	4000	>80	47000	38853	158	7.7	1
	40851	RIF S 240W C SD 4K	CONCENTRATING	246	4000	>80	47000	38005	154	7.7	1
	40854	RIF S 240W E SD 4K	ELLIPTICAL	246	4000	>80	47000	38638	157	7.7	1
RD	40821	RIF S 150W D ADJUSTABLE 010 4K	DIFFUSING	153	4000	>80	27000	22824	149	7.7	1
	40824	RIF S 150W C ADJUSTABLE 010 4K	CONCENTRATING	153	4000	>80	27000	21683	142	7.7	1
	40827	RIF S 150W E ADJUSTABLE 010 4K	ELLIPTICAL	153	4000	>80	27000	22140	145	7.7	1
	40830	RIF S 240W D ADJUSTABLE 010 4K	DIFFUSING	246	4000	>80	47000	40005	163	7.7	1
	40833	RIF S 240W C ADJUSTABLE 010 4K	CONCENTRATING	246	4000	>80	47000	38005	155	7.7	1
	40836	RIF S 240W E ADJUSTABLE 010 4K	ELLIPTICAL	246	4000	>80	47000	38805	158	7.7	1

DALI MODULAR ENCODING:
To create the DALI version device code, select a device in the range **RD** and add to its code the suffix **DL**
Example: Order Code 40821 + DL = Order Code 40821DL

DIFFUSING RD VERSIONS, WITH MANUALLY ADJUSTABLE FLUX/POWER IN 4 STEPS



Flux/Power	153W			246W		
	lm	W	lm/W	lm	W	lm/W
STEP 1	22824	153	149	40005	246	163
STEP 2	19623	129	152	33507	200	168
STEP 3	16398	105	156	27994	162	173
STEP 4	13779	87	158	23575	133	177

Diagram referring only to the DIFFUSING version with 4 current modulation steps to ensure maximum lighting efficiency. For data on the other versions (CONCENTRATING and ELLIPTICAL), please refer to the on-line catalogue.

NEXT >

H-PRO

lighting

SPECIAL VARIANTS - on request



CHROMATIC YIELD ≥ 90 - COLOUR TEMPERATURE ON REQUEST - VERSION WITH POLYCARBONATE DIFFUSER FOR HACCP ENVIRONMENTS (IP54)

ACCESSORIES - included



SD RADIO / 1 -10V INTERFACE

Order Code **15039**




SMART DIMMER LIGHT SENSOR

Order Code **15039**




M20 CABLE GLAND WITH VENT VALVE




VANDAL-PROOF SCREWS

ACCESSORIES - to be ordered separately




MOUNTING BRACKET FOR ELECTRIFIED BAR

Order Code **12659**




CEILING MOUNTING BRACKET

Order Code **12664**




HIGH BAY LIGHT SUSPENSION SYSTEM

Order Code **12663**



PROTECTIVE GRID


Order Code **12658**



GONIOMETRIC BRACKET




Order Code **12666**

BUILDING AUTOMATION - to be ordered separately




LOGICA SD LGFM CONTROL UNIT

Order Code **21102**





BUILDING AUTOMATION RADIO TRANSMITTER

Order Code **20104**





LUMINAIRE + EMERGENCY WITH PRE-WIRED LED INVERTER - modular coding

SD

BUILT-IN INVERTER	SUFFIX	EMERGENCY SYSTEM	BATTERY	AUTONOMY (h)	LED POWER (W)
	TR1	STANDARD	NiCd 7.2V 0.75Ah	1	3
	TR3	STANDARD	NiMH 7.2V 1.5Ah	3	3
	ATLG	AT-LG	LiFe 9.6V 1.5Ah	0.75/1/2/3/8	9/7/4/2/1
	LGFM	LGFM	LiFe 9.6V 1.5Ah	0.75/1/2/3/8	9/7/4/2/1
	ATLGGL	AT-LG	LiFe 12.8V 1.5Ah HT	0.75/1/2/3/8	15/10/5/3.3/1.25
	LGFMGL	LGFM	LiFe 12.8V 1.5Ah HT	0.75/1/2/3/8	15/10/5/3.3/1.25

LUMINAIRE + EMERGENCY WITH PRE-WIRED LED INVERTER - modular coding

RD

BUILT-IN INVERTER	SUFFIX	EMERGENCY SYSTEM	BATTERY	AUTONOMY (h)	LED POWER (W)
	TR1	STANDARD	NiCd 7.2V 0.75Ah	1	3
	TR3	STANDARD	NiMH 7.2V 1.5Ah	3	3
	ATLG	AT-LG	LiFe 9.6V 1.5Ah	0.75/1/2/3/8	9/7/4/2/1
	LGFM	LGFM	LiFe 9.6V 1.5Ah	0.75/1/2/3/8	9/7/4/2/1
	ATLGGL	AT-LG	LiFe 12.8V 1.5Ah HT	0.75/1/2/3/8	15/10/5/3.3/1.25
	LGFMGL	LGFM	LiFe 12.8V 1.5Ah HT	0.75/1/2/3/8	15/10/5/3.3/1.25

Each luminaire in this series can be **configured and pre-wired directly in production**, ready for installation.

For orders, create the code by specifying the control system using the following tables:

Order Code LUMINAIRE + SUFFIX, for example, to order an Autotest Logica GranLuce (AT-LG) 150W H-PRO high bay light, add to the Order Code 40839 the suffix ATLGGL = Order Code 40839ATLGGL