



# Saving Stagna LED

SAVING IP65 LED 236 4000K

Order code **72010**

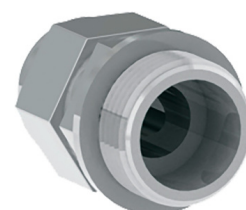
EAN 8002219728968

## Technical specifications

Absorbed Power	<b>28 W</b>
Supply voltage type	<b>AC</b>
Nominal voltage (AC)	<b>230 Vac</b>
Ambient temperature (min)	<b>-20 °C</b>
Ambient temperature (max)	<b>40 °C</b>
Insulation class	<b>I</b>
CCT light tone	<b>4000 K</b>
LED number	<b>192</b>
Out current (Qty max)	<b>200</b>
Photobiological risk	<b>RG0</b>
Colour consistency	<b>SDCM3</b>
Colour reflector	<b>White RAL 9003</b>
CRI color rendering	<b>&gt;80</b>
Driver type	<b>ED</b>
Ballast	<b>For constant current LED</b>
Efficiency	<b>161 lm/W</b>
Equivalent power	<b>2x36w</b>
Frequency (max)	<b>60 Hz</b>
Frequency (min)	<b>50 Hz</b>
Power factor	<b>0.98</b>
Glow wire strength	<b>850 °C - 30s.</b>
Inrush current	<b>13.5 A</b>
Inrush time	<b>0.17</b>
MTBF driver	<b>50000 h</b>
Luminaire flux	<b>4500 lm</b>
Luminous flux L80B20	<b>60000 h</b>
Mounting	<b>Wall, Ceiling, Suspension, Electrified rail</b>
Breaker B10 (Qty max)	<b>25</b>
Breaker B16 (Qty max)	<b>40</b>
Breaker C10 (Qty max)	<b>25</b>
Breaker C16 (Qty max)	<b>40</b>
THD	<b>20</b>
Voltage supply range (max)	<b>253 V</b>
Voltage supply range (min)	<b>207 V</b>

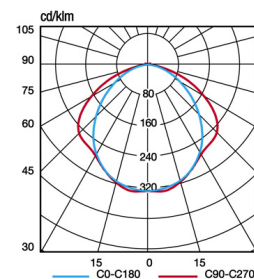
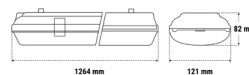
## Installation and applications

Environment	<b>Secondary Areas</b>
Application	<b>Industrial Areas, Stores, Shelters, Garages, Production</b>



## Mechanical specifications

Height	<b>82 mm</b>
Length	<b>1264 mm</b>
Width	<b>121 mm</b>
Body material	<b>Polycarbonate</b>
Colour housing	<b>Grey RAL 7035</b>
Cover material	<b>Transparent Photoengraved Polycarbonate</b>
Reflector material	<b>Sheet steel epoxy coated</b>
Protection grade IP	<b>IP65</b>
Protection grade IK	<b>IK05</b>



## Certifications and norms

UK SI 2021 No. 1095, EN 62471:2008, EN IEC 60598-1:2021, EN 60598-2-1:1989, EN IEC 63000:2018, EN 62493:2010, EN 61000-3-3:2013, REG. 2019/2020(EU), EN IEC 55015:2019 + A11:2020, EN IEC 61000-3-2 :2019

## Inverter accessories



**19371**  
INV P&L LED SE/SA 3H 60-180V



**19367**  
INV P&L LED SE/SA 1H 60-180V